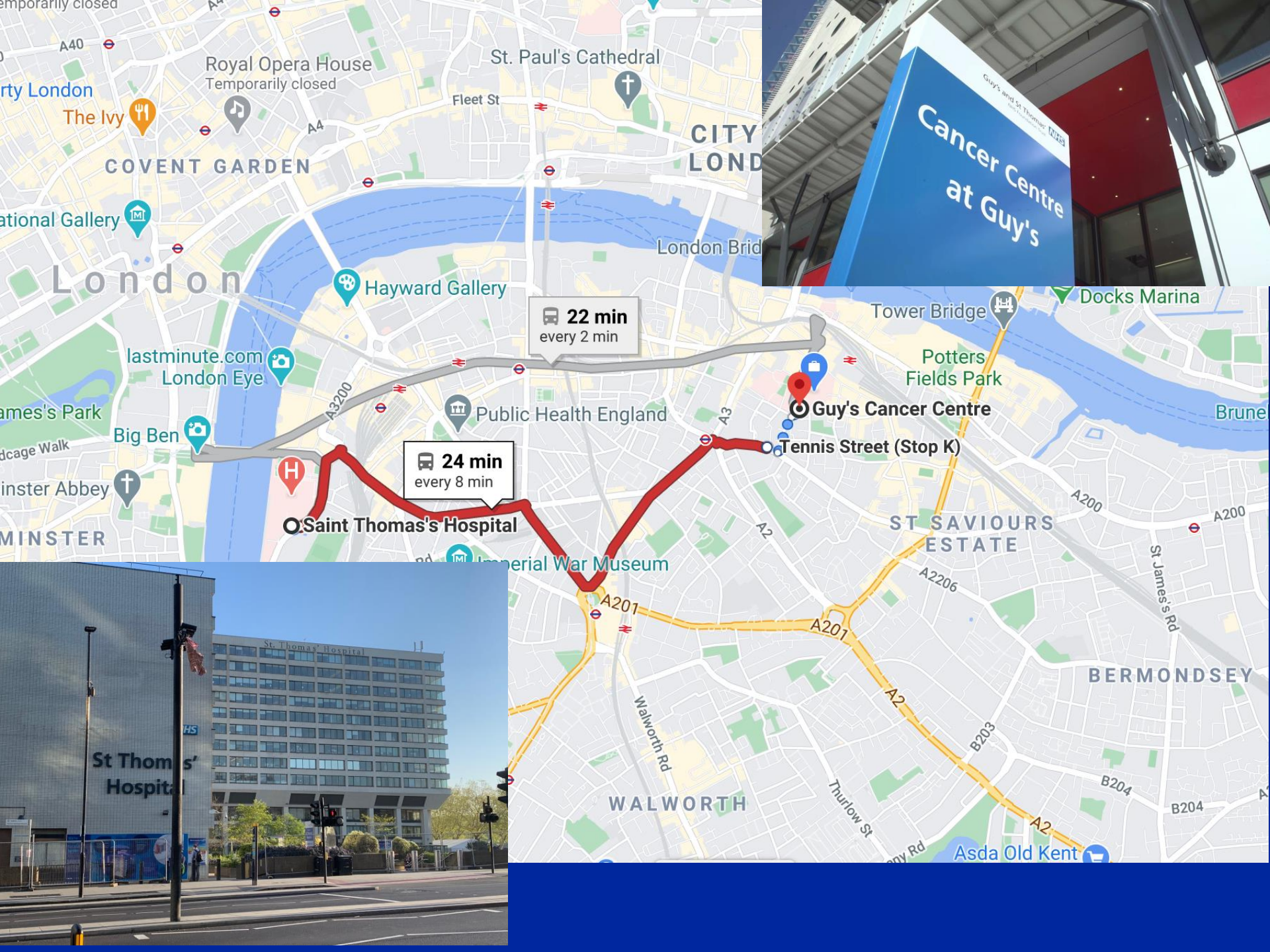
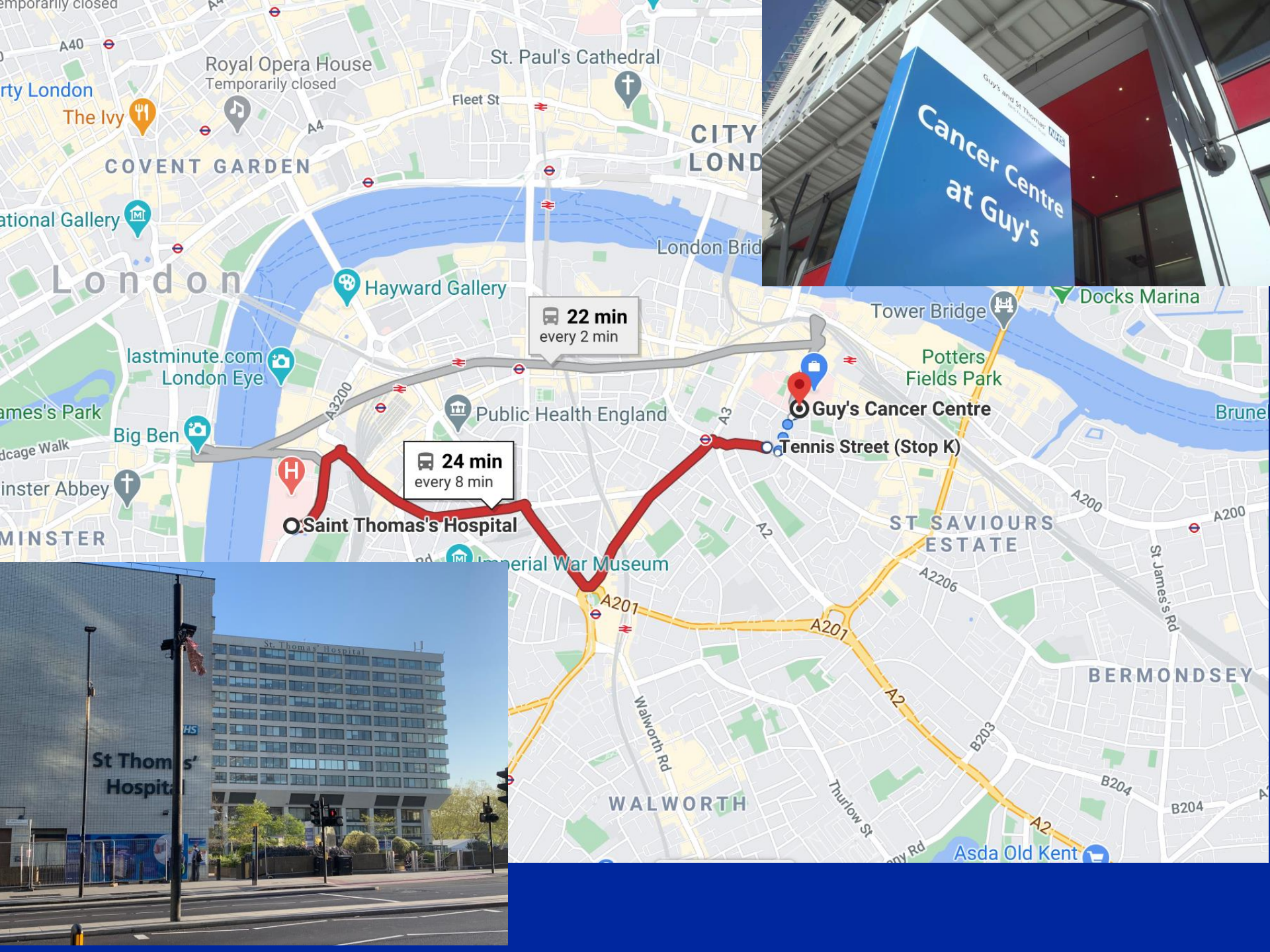


# **How has COVID-19 changed (my) breast cancer practice?**

## **Breast pathology**

**SE Pinder**



# March – April 2020

The recently established Pan London clinical discussion group on breast cancer recommends implementation of the five following sets of guidelines:

- Breast Cancer is managed in line with the '*Statement from the Association of Breast Surgery*' (attached).
- *Pan-London Suspected Breast Cancer / Breast Clinic Referral Form* (attached).
- '*Guidance for breast pathology staff in the COVID 19 pandemic*' from the National Co-ordinating Committee for Breast Pathology (NCCBP) and the Association of Breast Pathology (ABP) - attached.
- *UK BCG Radiotherapy in early breast cancer in current COVID-19 pandemic.*
- *Breast systemic therapies prioritisation during COVID-19 crisis.*

Trusts across London will work within the framework of the various professional guidelines but with local nuances.

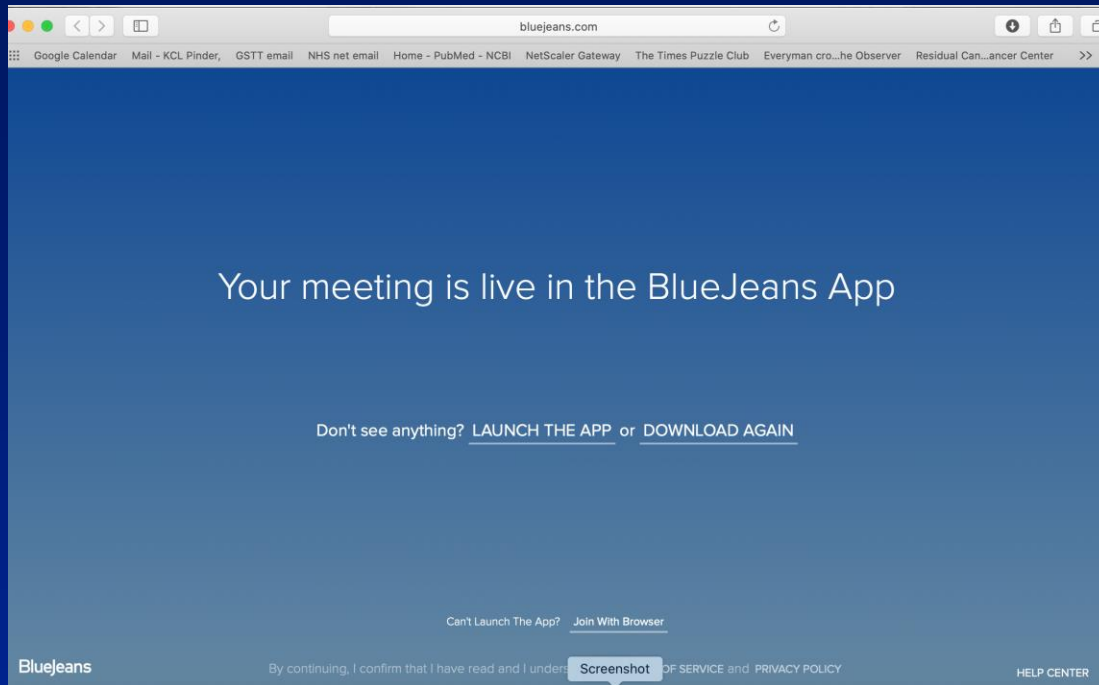


# Operating list sizes not very different March/April

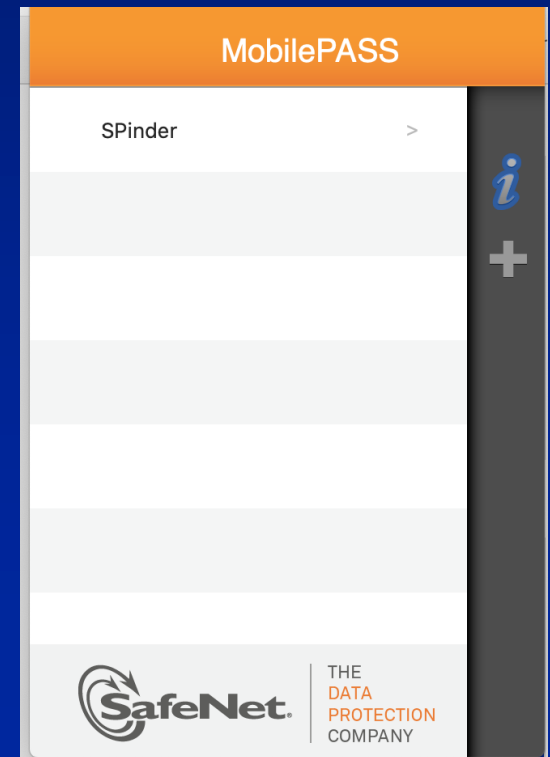




# Mid-March



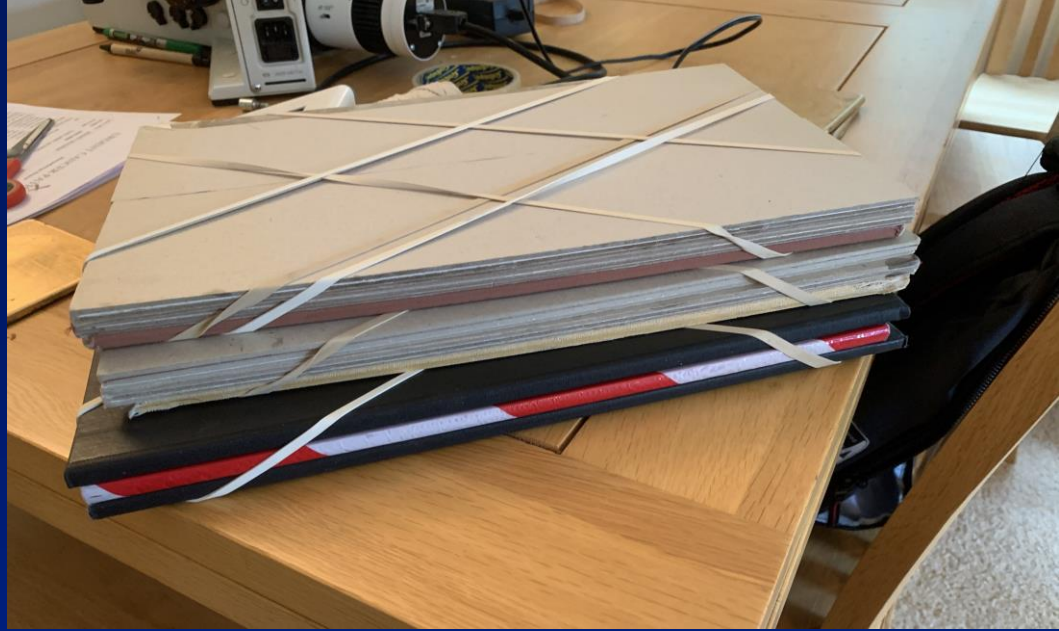
# Early April



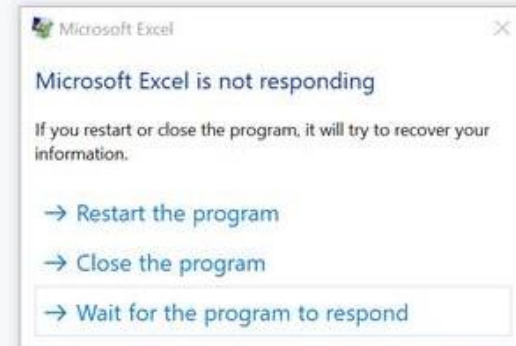














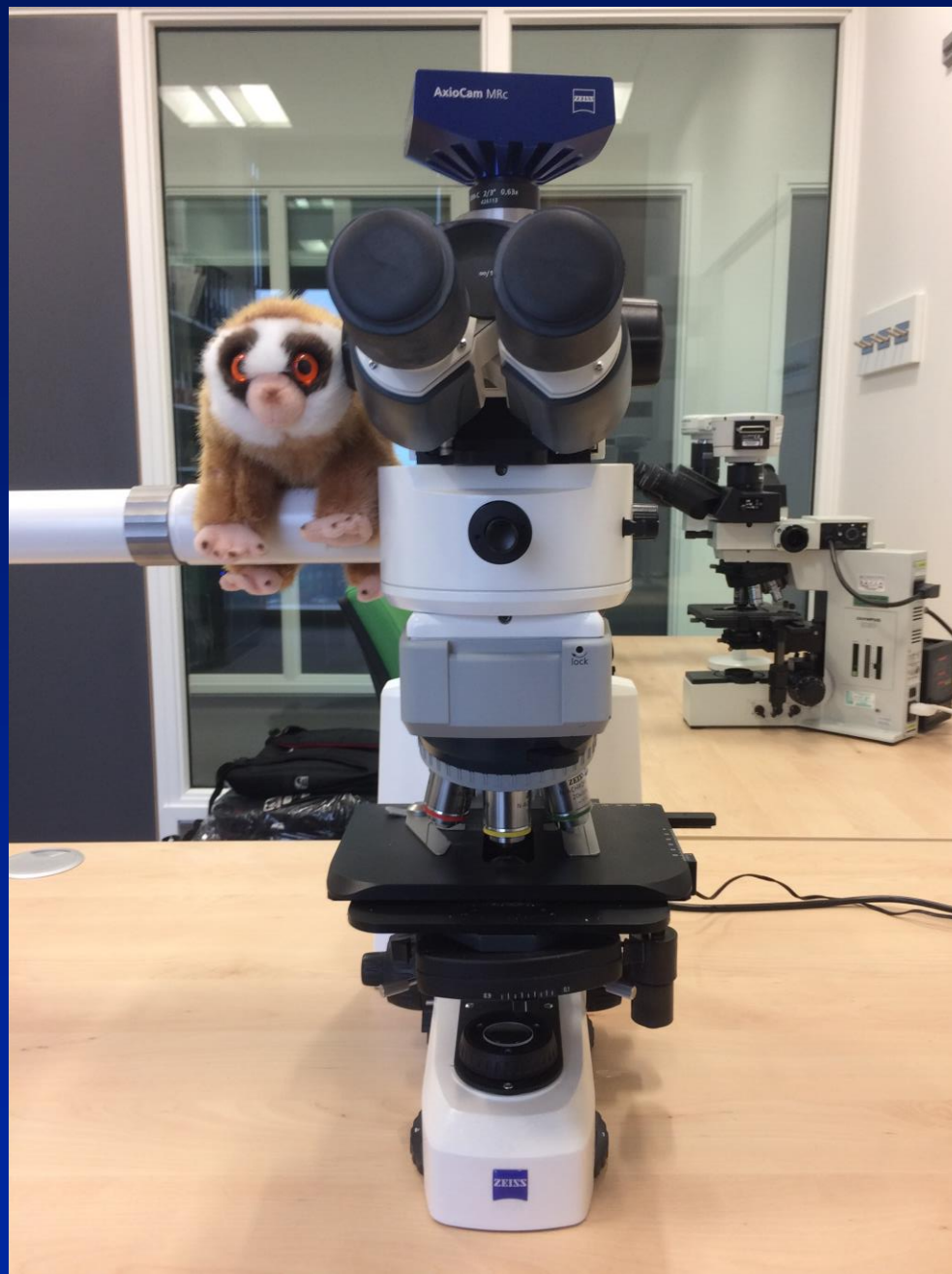




# What social distancing? Commuters pack on to Tubes, trains and buses as coronavirus lockdown eases

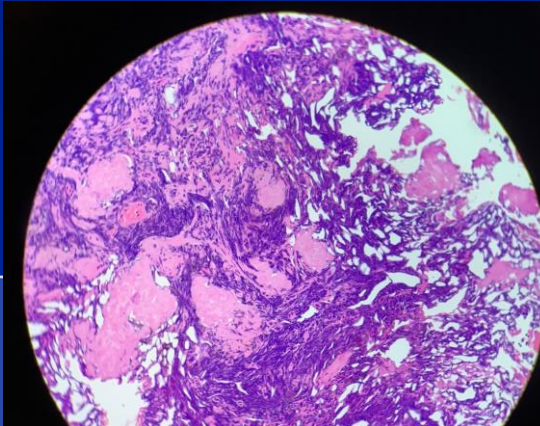
HEALTH | TRAVEL | CORONAVIRUS | ⌚ Wednesday 13 May 2020, 2:12pm







# Breast Pathology

The good	The bad	The ugly
No commute	Commuting time filled	Evening reporting
WhatsApp group. Online conferencing.	No weekly breast slide review meeting. Work type distribution.	
New skills	Lack of digital pathology, IT	Wi-fi speed – transfer of large (images and ppt) files
	Affect on research, cancer trials, funding conferences. Research staff still on furlough.	
	Affect on pathology training and trainees	



