

# Digital Pathology in practice

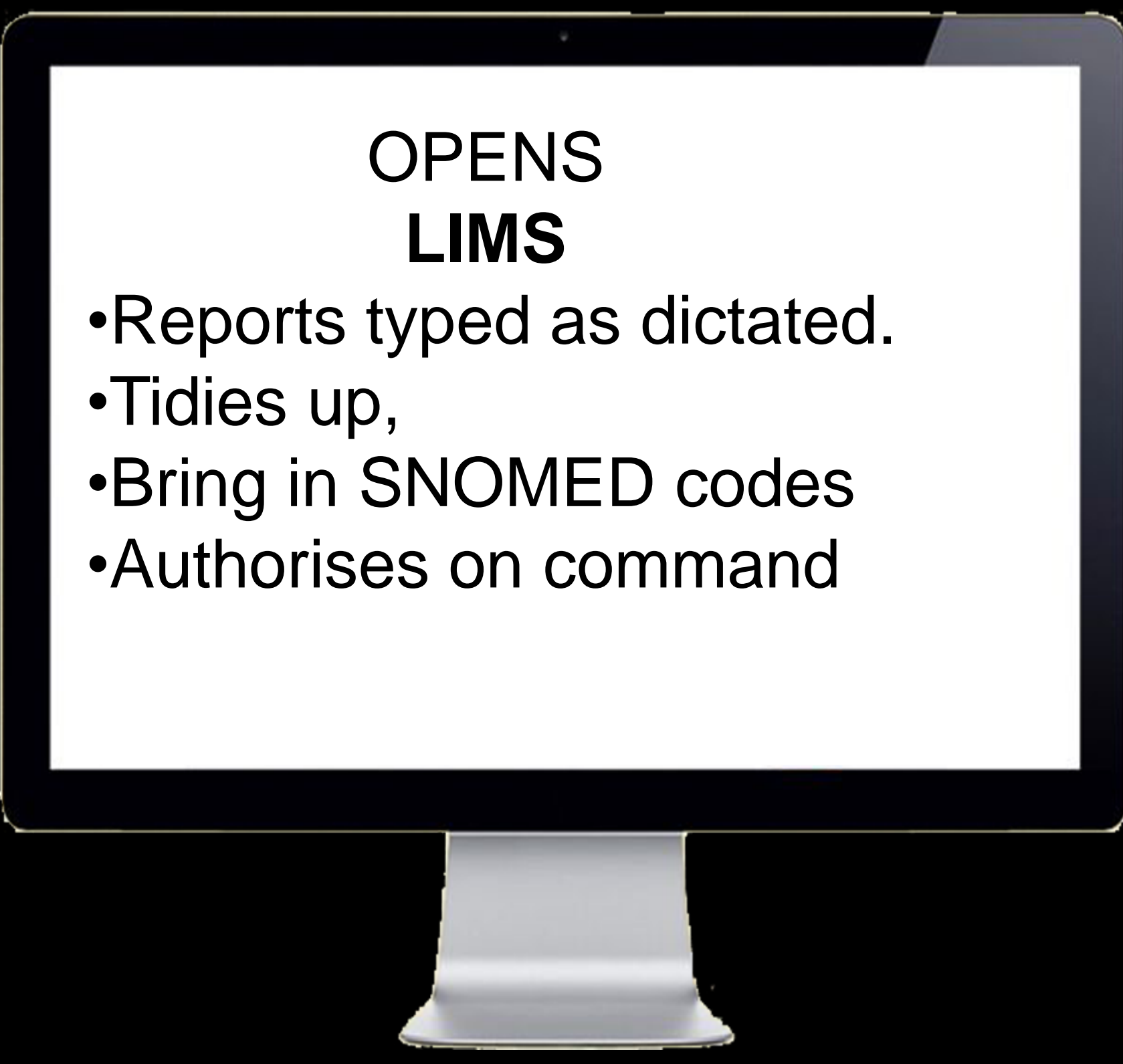
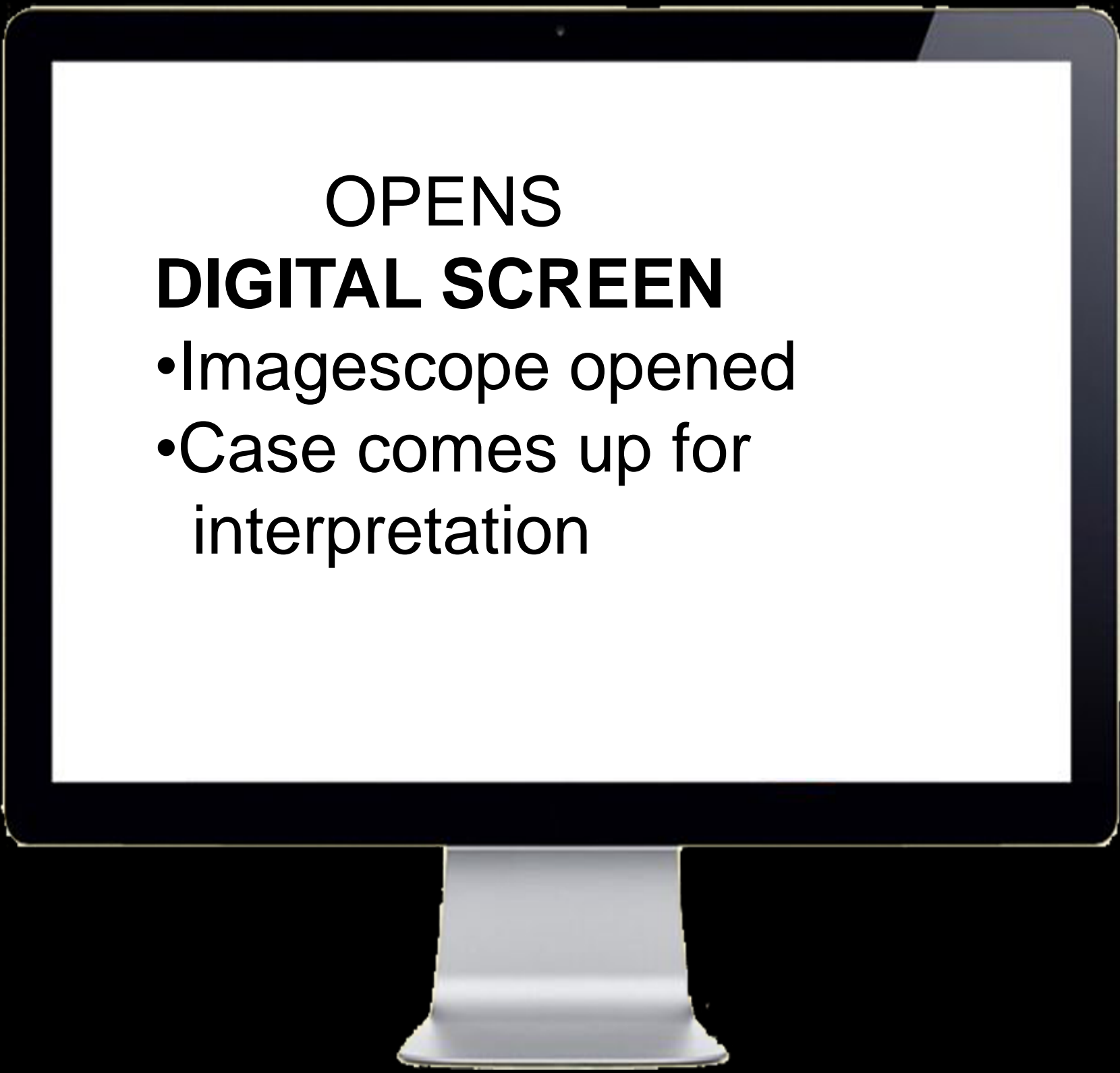
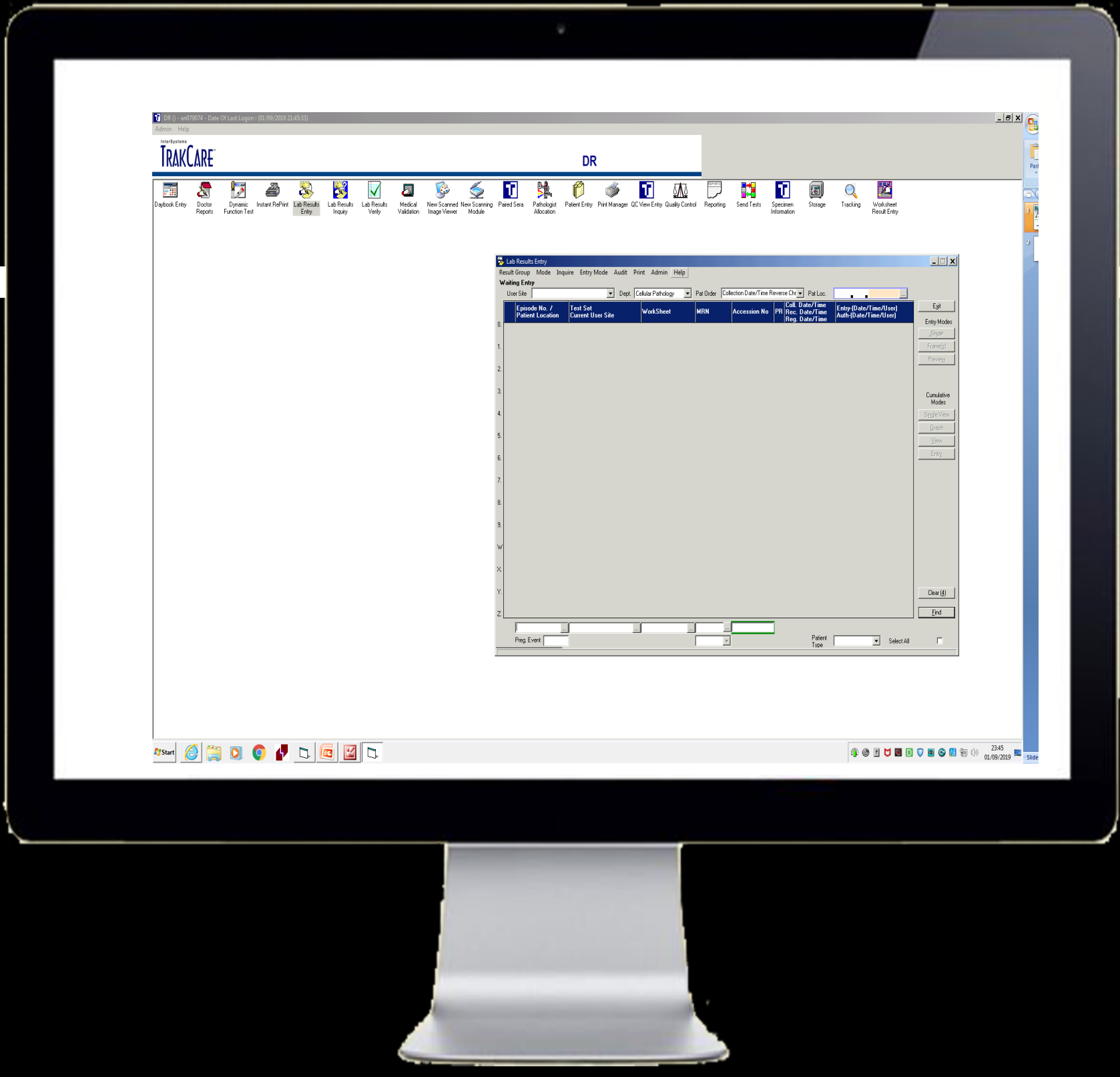
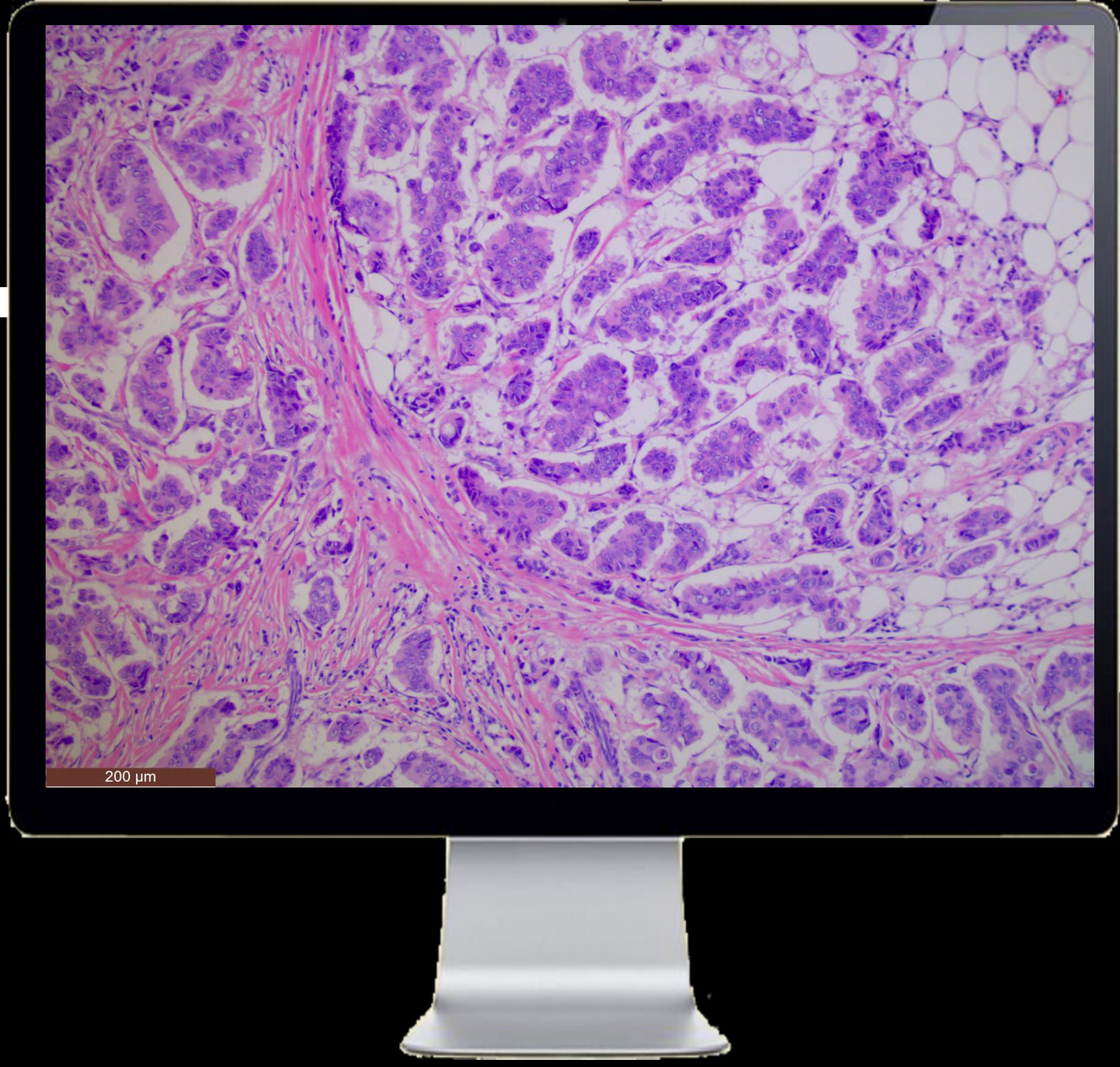
Dr Anu Gunavardhan  
MD,DNB,FRCPath  
Consultant Histopathologist  
Lead breast pathologist BCUHB  
Glan Clwyd Hospital  
Bodelwyddan





- Digital pathology verification project completed in 2017
- 15% of cases reported digitally
- Plans to full digitisation in next phase across Wales







# IT issues

- Difficulty in integrating Laboratory information systems to digital (whole slide imaging) systems
- Time taken for scanning
- Urgents and breast cases not gone for digital pathway
- System crashes frequently
- Updates in windows requires an update of software from digital provider

# Staffing issues

- Extra work for laboratory staff without extra resources
- Mysterious “breaking down of scanners”

# Quality of sections

- Appropriate thickness
- Appropriate staining
- Cover slipping
- Cleaning

# Current practise

- Reporting of routine non urgent cases
- Teaching
- MDTs



# Learning points

- Need digital system that can integrate with Laboratory system
- Dictation software that can integrate
- Investment in human resources
- Resources for software updates
- 100% digitisation to make efficiency in staffing
- The above said challenges could turn into opportunities and strengths to improve the quality of work



# THANKYOU

